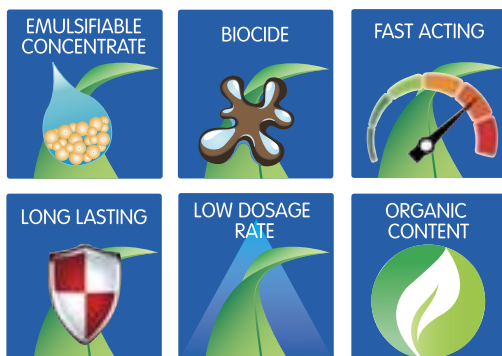




CHEMICALS

Enclean NEW

A **multi-surface biocide** for cleaning hard surfaces



WHY ENCLEAN

- › Multi surface 'plant origin' biocide
- › Removes algae and lichen from hard surfaces
- › Fast acting
- › Long lasting
- › Rapid degrades to natural elements
- › Low dose rate
- › Convenient emulsifiable concentrate

Enclean is fast acting, long lasting with results visible a few hours following treatment. Removes algae and green deposits from hard surfaces and building materials.

How to use Enclean


Mix well before use and apply as a diluted spray, using a Red 04 evenspray nozzle, direct to the area to be treated. Avoid spray drift onto desirable plants and do not apply to surfaces if rain expected within 1 hour of application. One litre of Enclean plus 14 litres water in a 15 litre knapsack will treat 555 m².

On what it can be used

Asphalt * Block Paving * Bricks * Concrete * Exterior wood * Glass * Plastic * Artificial Grass * Tarmac

Areas of use

Pavements * Walls * Paved Patio * Decking Street Furniture * Fencing panels Roofs (tiled) * Headstones * Artificial Surfaces * Greenhouses (exterior) * Playing surfaces



Product Detail

Contains: 500 g/l Nonanoic Acid
 Pack size: 1 litre
 Pack coverage: 555m²
 RT order code: 0105086/01

APPLICATION RATES		
Enclean	Water	Area
1 litre	14 litres	555m ²
100 ml	1.4 litres	56m ²

To calculate volume of Enclean required measure area in m² and multiply by 1.8
 To work out volume of spray solution required multiply area by 27.

RECOMMENDED PERIOD OF USE

Jan	Feb	Mar	Apr	May	Jun	Jul	Aug	Sep	Oct	Nov	Dec
-----	-----	-----	-----	-----	-----	-----	-----	-----	-----	-----	-----

Use plant protection products safely. Always read the label and product information before use.

