



CHEMICALS



Product selector

DISEASE CONTROL

Fungicide	Activity	Type	Fusarium Patch	Dollar Spot	Anthrac-nose	Red Thread	Take-all Patch	Leaf Spot	Brown Patch	Rust	Fairy Ring	Page Number
Eland	Translaminar	Preventative	✓	✓*	✗	✓	✗	✓	✗	✗	✓	51
Dedicate	Systemic	Eradicant/Protective	✓	✓	✓	✓	✗	✓	✓*	✓	✗	50
Exeris	Systemic	Curative/Protective	✓	✓	✗	✗	✗	✓*	✗	✗	✗	52
Instrata Elite	Syst/Contact	Preventative/Curative	✓	✓	✗	✗	✗	✗	✓	✗	✗	53
Medallion TL	Contact	Preventative	✓	✗	✓	✗	✗	✓	✗	✗	✗	54
Heritage	Systemic	Preventative/Curative	✓	✓	✓	✗	✓	✓	✓	✓	✓	56
Heritage Maxx	Systemic	Preventative/Curative	✓	✓	✓	✗	✓	✓	✓	✓	✓	57

* Post renovation

PEST CONTROL

Pesticide	Activity	Type	Earthworms	Nematodes		Page Number
ClearCast Green	Systemic	Repellant	✓	✗		74
EGC Amenity	Contact	Protective/Curative	✗	✓		72

SELECTIVE WEED CONTROL

Herbicide	Activity	Types of weed controlled						Page Number
		Broad-leaved	Ryegrass	Brushwood	Invasive	Moss	New* grass	
Junction	Translocated	✓	✗	✗	✗	✗	✓	62
Crossbar	Translocated	✓	✗	✗	✗	✗	✓	61
Pivotal	Translocated	✓	✗	✗	✓	✗	✗	63
Icade	Translocated	✓	✗	✓	✓	✗	✗	60
Nurture†	Contact/Systemic	✓	✗	✗	✗	✓	✓	73

†Compound Fertilizer

*On new grass 8 weeks after sowing

PLANT GROWTH REGULATOR

Product	Type	Application Activity						Page Number
		Inhibits Vertical Growth	Lateral Stem Development	Seed Head Suppression	Reduced Mowing Frequency	Increased Root Mass	Weed Control	
Maintain NT	Bio Synthesis Inhibitor	✓	✓	✓	✓	✓	✗	67
Kopis	Bio Synthesis Inhibitor	✓	✓	✓	✓	✓	Meadow Grass	67

TOTAL WEED CONTROL

Herbicide	Activity	Types of Weed Controlled							Page Number
		Broad-leaved	Grasses	Brushwood	Perennials	Stump regrowth	Moss	Aquatic	
Hi-Aktiv Amenity	Translocated/non-residual	✓	✓	✓	✓	✓	✗	✓	68
Gallup Biograde	Translocated/non-residual	✓	✓	✓	✓	✓	✗	✓	70
Discman Biograde	Translocated/non-residual	✓	✓	✓	✓	✗	✗	✓	71
Chikara	Contact/residual	✓	✓	✗	✗	✗	✗	✗	64
Katoun Gold	Contact/non-residual	✓	✓	✗	✗	✗	✗	✗	66
Ecoplug Max	Non-spray/Translocated	✗	✗	✓	✗	✓	✗	✗	77

MOSS CONTROL

Herbicide	Activity	Areas of Use				Page Number
		Tees & Greens	Lawns	Fairways	Playing Areas	
Lawn Sand	Contact	✓	✓	✓	✓	73
Maxicrop No2	Contact	✓	✓	✓	✓	113
Nurture	Contact/Systemic	✓	✓	✓	✓	73

SPECIALITY CHEMICALS

Product	Area of use	Activity	Page Number
Qualgex Pro	✗	Removes algae and lichen from hard and artificial surfaces, timber, glass and tiles	48
Enclean	✗	Plant based biocide for control of algae and lichen on hard and artificial surfaces	49
TriMate	✓	Tank mixable adjuvant that improves recovery and fungicide surface retention and leaf penetration	59
Trailblazer Trio	✓	Spray pattern indicator/anti-drift agent/water conditioner	75
Water Condition-R	✗	Improves performance of herbicides by reducing water hardness	75
Clearspray	✗	Tank cleaner. Effective against all amenity pesticide residues, including glyphosate	76
Foamcheck	✓	Defoaming of spray tank solutions. Especially suitable for wetting agents	76
RT Remediact	✓	Remediation and recovery of turf contaminated by hydraulic oil and fuel spills.	78
RT FleetKleen	✗	Cleaning agent for removal of oil/fuel/grease stains from hard surfaces/machinery	79



CHEMICALS

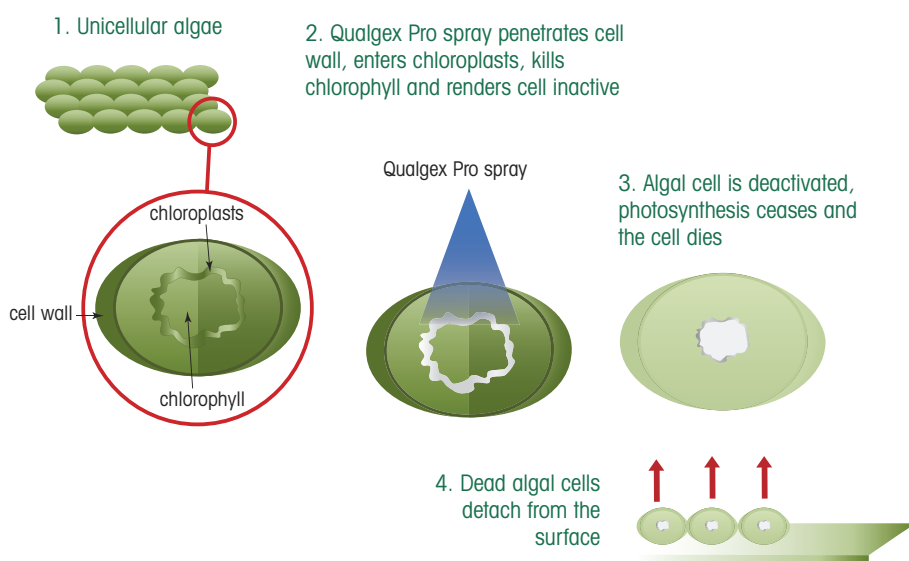
Qualgex Pro

A **surface biocide** for professional use against algae on external hard surfaces



WHY QUALGEX PRO

- › Fully HSE registered
- › Contains citric acid and penetrant to aid efficacy
- › Highly active and long lasting product
- › Rapid acting – results seen within 48 hours
- › Effective against all types of algae
- › Effective cleaning action which 'brightens' surface
- › For best results, apply using an anvil type nozzle



Product Detail

Contains: Alkyl C12-C14 dimethyl benzylammonium chloride 19.8%

HSE No: 10487

Pack size: 5 litres

Pack coverage: 500m²

RT order code: 0488701/05

APPLICATION RATES

Qualgex Pro	Water	Area
50ml	1 litre	5m ²
1 litre	20 litres	100m ²
5 litres	100 litres	500m ²

RECOMMENDED PERIOD OF USE

Jan	Feb	Mar	Apr	May	Jun	Jul	Aug	Sep	Oct	Nov	Dec
-----	-----	-----	-----	-----	-----	-----	-----	-----	-----	-----	-----

Use plant protection products safely. Always read the label and product information before use.

How Qualgex Pro works

Qualgex Pro is soluble in water, non-corrosive and safe to most surfaces so is an ideal maintenance product for local authorities, schools, commercial premises etc. Qualgex Pro is one of the strongest products on the market and is a Health & Safety executive registered biocide.

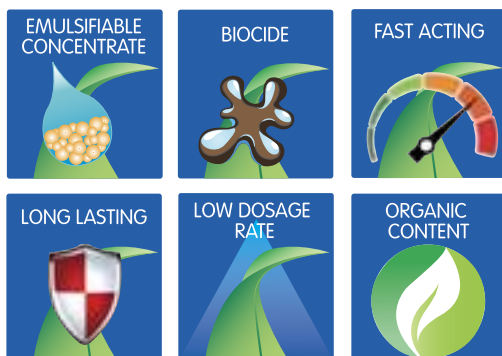
A unique feature of Qualgex Pro is that unlike some other biocides, it is not de-activated by organic matter, consequently it will work effectively on dirty surfaces such as paths that have not been kept clean.



CHEMICALS

Enclean NEW

A **multi-surface biocide** for cleaning hard surfaces



WHY ENCLEAN

- › Multi surface 'plant origin' biocide
- › Removes algae and lichen from hard surfaces
- › Fast acting
- › Long lasting
- › Rapid degrades to natural elements
- › Low dose rate
- › Convenient emulsifiable concentrate

Enclean is fast acting, long lasting with results visible a few hours following treatment. Removes algae and green deposits from hard surfaces and building materials.

How to use Enclean


Mix well before use and apply as a diluted spray, using a Red 04 evenspray nozzle, direct to the area to be treated. Avoid spray drift onto desirable plants and do not apply to surfaces if rain expected within 1 hour of application. One litre of Enclean plus 14 litres water in a 15 litre knapsack will treat 555 m².

On what it can be used

Asphalt * Block Paving * Bricks * Concrete * Exterior wood * Glass * Plastic * Artificial Grass * Tarmac

Areas of use

Pavements * Walls * Paved Patio * Decking Street Furniture * Fencing panels Roofs (tiled) * Headstones * Artificial Surfaces * Greenhouses (exterior) * Playing surfaces



Product Detail

Contains: 500 g/l Nonanoic Acid
Pack size: 1 litre
Pack coverage: 555m²
RT order code: 0105086/01

APPLICATION RATES		
Enclean	Water	Area
1 litre	14 litres	555m ²
100 ml	1.4 litres	56m ²

To calculate volume of Enclean required measure area in m² and multiply by 1.8
To work out volume of spray solution required multiply area by 27.

RECOMMENDED PERIOD OF USE

Jan	Feb	Mar	Apr	May	Jun	Jul	Aug	Sep	Oct	Nov	Dec
-----	-----	-----	-----	-----	-----	-----	-----	-----	-----	-----	-----

Use plant protection products safely. Always read the label and product information before use.

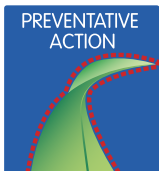




CHEMICALS

Dedicate NEW

A **contact and systemic fungicide** with eradicant and preventative activity against most major turf diseases



WHY DEDICATE

- Controls Fusarium Patch, Red Thread, Dollar Spot, Anthracnose, Leaf Spot and Rust in amenity turf
- Combination of trifloxystrobin and tebuconazole offers both contact and systemic activity
- Wide window of application over the season – can be used any time of year
- Low application rate gives cost effective control
- Ideal as part of an integrated disease management programme



Product Detail

Contains: 200g/l (18.2% w/w) tebuconazole and 100g/l (9.1%) trifloxystrobin
 MAPP No: 17003
 Pack size: 250ml
 Pack coverage: 2,500m²
 RT order code: 0633123/250

APPLICATION RATES

Equipment	Dedicate	Water Volume	Area
Vehicle Mounted Hydraulic Sprayer	1 litre	400-500 litres	1ha
Knapsack Sprayer	50ml	20-25 litres	500m ²

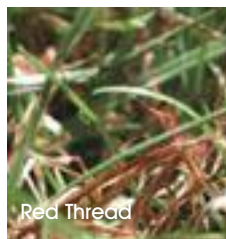
RECOMMENDED PERIOD OF USE

Jan	Feb	Mar	Apr	May	Jun	Jul	Aug	Sep	Oct	Nov	Dec
-----	-----	-----	-----	-----	-----	-----	-----	-----	-----	-----	-----

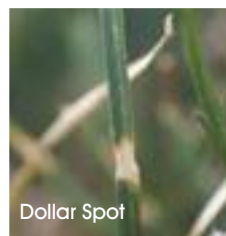
Use plant protection products safely. Always read the label and product information before use.



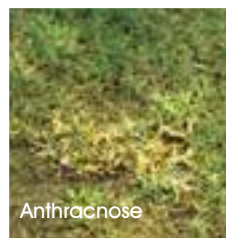
Fusarium



Red Thread



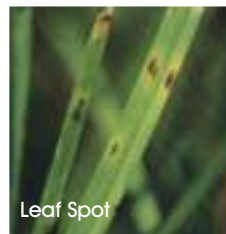
Dollar Spot



Anthracnose



Rust



Leaf Spot

How Dedicate works

Dedicate is a dual action fungicide containing both trifloxystrobin and tebuconazole, offering both protective and some eradicant activity.

This product has very good rainfast properties, provides long-lasting control and can be used all year round, even at very low temperatures providing the weather conditions are appropriate.

Dedicate can be used when grass is either dormant or actively growing, ideally applied prior to or immediately disease symptoms first appear. If grass is being mown, **Dedicate** should be applied after cutting and further mowing should not take place until at least 48 hours after treatment.

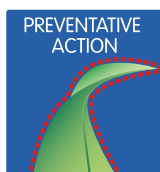
Alternate with a fungicide having a different mode of action.

Dedicate can be tank mixed with other products such as **TriMate** or **Option** and **Magnet Velocite**.



Eland

A **broad spectrum fungicide** for the control of Fusarium Patch, Red Thread, Dollar Spot and other key diseases in managed amenity turf



How Eland works

The translaminar properties of this exciting molecule allow **Eland** to move around the leaf and control disease both on its upper and on its lower surface. This unique activity protects both sides of the leaf within minutes of application.

The spray deposit serves as a constant fungicide reservoir, releasing active ingredient to provide long-term protection. **Eland** is especially suited to being applied as a preventative treatment, especially at times when turf disease pressure is high. It can also restrain mycelial growth and thereby provide additional curative activity.

Improved sward appearance. Treatments of **Eland** stimulate an increase in the plants capacity to convert nitrite to nitrate which improves the plants use of Nitrogen, resulting in the turf exhibiting an enhanced green colour. A further effect is a decrease in the release of ethylene, which leads to higher stress tolerance for the plant and is a major benefit during periods of drought.



Eland offers dual-sided leaf protection

WHY ELAND

- › Latest generation strobilurin fungicide – can be used all year round
- › Increased persistence, wide spectrum of activity
- › Activity with long term efficacy
- › Rainfast 1 hour after application
- › Enhances appearance of the sward
- › Excellent turf safety



Product Detail

Contains: 200g/kg (20% w/w) pyraclostrobin
 MAPP No: 19468
 Pack size: 250g bottle
 Pack coverage: 2,000m²
 RT order code: 0632370/250

APPLICATION RATES

Equipment	Eland	Water Volume	Area
Vehicle Mounted	1.25kg	200 litres	1ha
Knapsack Sprayer	62.5g	25 litres	500m ²

RECOMMENDED PERIOD OF USE

Jan	Feb	Mar	Apr	May	Jun	Jul	Aug	Sep	Oct	Nov	Dec
-----	-----	-----	-----	-----	-----	-----	-----	-----	-----	-----	-----

Use plant protection products safely. Always read the label and product information before use.

Broad spectrum disease control

Controls all major turf diseases ...with high level activity against:

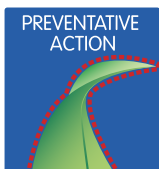
Anthracnose	Melting Out
Brown Patch	Pythium Blight (Damping Off)
Fairy Ring	Red Thread
Fusarium Patch	Rust
Snow Mould	Take-all Patch
Leaf Spot	Dollar Spot suppression



CHEMICALS

Exteris Stressgard

SDHI and QoL chemical group
fungicide providing different
modes of action



WHY EXTERIS

- › Excellent management of Fusarium Patch, Dollar Spot, Leaf Spot and Anthracnose
- › Provides early curative and preventative activity
- › Improves turf quality and playability
- › Drought stress reduction
- › Excellent control of leaf spot post renovation
- › Enhances turf colour
- › New element of integrated disease management programmes

SDHI chemistry expertly engineered to target Microdochium Patch and Dollar Spot delivering first class disease management and proven health benefits



How Exteris works

The SDHI in Exteris is fluopyram, which is commonly referred to as an Acropetal Penetrant. Fluopyram can penetrate plants through the roots, shoots and leaves. Forms a protective barrier on the plant, permeates into the plant and moves upwards (acropetal) in the plant's xylem. This fungicide has preventative and early curative activity.

Combined with the Stressgard Formulation Technology, a unique combination of active ingredients, inert ingredients and turf specific co-formulants all combine to assist the product performance under turf disease and stress conditions. The result is an upgrade in performance of the product, providing superior disease management, leading to visibly healthier turf.



Product Detail

Contains: Fluopyram 12.5 g/l, Trifloxystrobin 12.5 g/l

MAPP No. 17825

Pack size: 5 litres

Pack coverage: 5,000m²

RT order code: 0632340/050

APPLICATION RATES			
Equipment	Exteris	Water Volume	Area
Vehicle mounted Hydraulic sprayer	10 litres	200-600 litres	1ha
Knapsack Sprayer	500ml	10-30 litres	500m ²

RECOMMENDED PERIOD OF USE

Jan	Feb	Mar	Apr	May	Jun	Jul	Aug	Sep	Oct	Nov	Dec
-----	-----	-----	-----	-----	-----	-----	-----	-----	-----	-----	-----

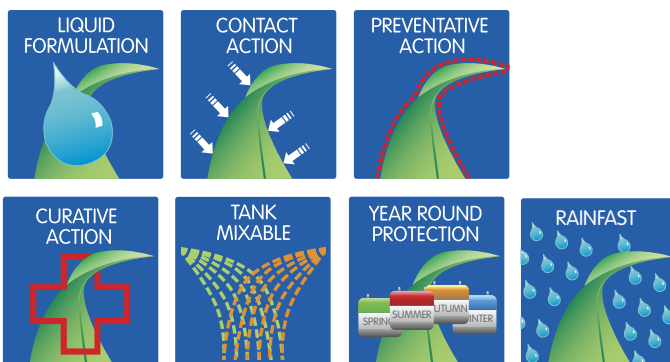
Use plant protection products safely. Always read the label and product information before use.



CHEMICALS

Instrata Elite NEW

A **broad spectrum foliar fungicide** with both systemic and contact activity against most major turf diseases.



WHY INSTRATA ELITE

- › Excellent protection from Microdochium in high-risk periods September - November
- › In high-risk situations combines systemic and contact action
- › Tank mix with either Trimate or Option, and Magnet Velocite to broaden spectrum
- › Dual mode of action – preventative and early curative activity
- › Rainfast in 30 minutes
- › Use all year round

Dual Action – Outside-in Protection

The unique combination of actives developed by Syngenta in **Instrata Elite** provides excellent control of spores from the explosive mode of action of fludioxonil combined with the systemic DMI mode of action from Difenoconazole acting from inside on mycelial growth



Instrata Elite rapidly locks onto leaf wax providing a protective barrier which is rainfast in 30 minutes. After locking onto the wax around 20% of the active ingredient rapidly moves into the leaf. This provides an immediate curative effect-attacking any disease that is present within the plant. The remaining difenoconazole stays within the leaf wax and provides a reservoir of active. The active in the surface reservoir flows into the leaf over time – replenishing active that has moved systemically to new growth or been degraded. This maintains a constant active concentration within the leaf delivering longer lasting *outside-in protection*.



Product Detail

Contains: 80.3 g/l Difenoconazole plus 80.3 g/l Fludioxonil

MAPP No. 17976

Pack size: 1 & 3 litres

Pack coverage: 3,333m² & 1ha

RT order code: 0633151/01 & 0633151/03

APPLICATION RATES				
Equipment	Instrata Elite	Water Volume	Area	
Vehicle mounted Hydraulic sprayer	3 litres	125-500 litres	1ha	
Knapsack Sprayer	30ml	3-5 litres	100m ²	

RECOMMENDED PERIOD OF USE

Jan	Feb	Mar	Apr	May	Jun	Jul	Aug	Sep	Oct	Nov	Dec

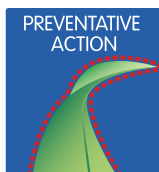
Use plant protection products safely. Always read the label and product information before use.



CHEMICALS

Medallion TL NEW

A **contact fungicide** providing a protection shield to control spores prior to the disease entering foliage



WHY MEDALLION TL

- › Activity on leaf, in thatch and soil surface
- › Unique mode of action – causing spores to explode
- › Ideal Tank mix partner for other products
- › Bio-inspired contact activity
- › Ideal end of season cold weather protection

How Medallion TL works

Fludioxonil, the active ingredient in **Medallion TL** is a fungicide from the phenylpyrrole chemical class. This group is derived from the natural antifungal pyrrolnitrin, produced by *Pseudomonas pyrocinia* soil bacteria.

The antifungal activity of metabolites isolated from *Pseudomonas* were first developed in human medicine and widely used in pharmaceutical research.

Medallion TL offers a solution with outstanding high levels of disease control and exceptional long-term results. It has been bio-inspired by naturally occurring soil organisms which stop fungi developing.

Medallion TL is an extremely effective contact fungicide, providing a shield of protection on the leaf to prevent infection getting in and to stop disease spread. The fungicide bonds onto the leaf wax layer, making it rainfast within one hour. Tight binding to the leaf coupled with rapid rainfastness ensures it won't be washed off by rainfall or irrigation, and will continue to provide long-lasting results.

Medallion TL also targets turf disease pathogens present in the thatch and soil surface, significantly reducing the reservoir of infection. Tackling disease in the thatch knocks down spore numbers that will reduce disease pressure and can enhance the duration of protection delivered



Product Detail

Contains: 125 g/l Fludioxonil

MAPP No. 15287

Pack size: 1 & 3 litres

Pack coverage: 3,333m² & 1ha

RT order code: 0105119/01 & 0105119/03

APPLICATION RATES			
Equipment	Medallion TL	Water Volume	Area
Vehicle mounted Hydraulic sprayer	3 litres	125-500 litres	1ha
Knapsack Sprayer	30ml	3-5 litres	100m ²

RECOMMENDED PERIOD OF USE

Jan	Feb	Mar	Apr	May	Jun	Jul	Aug	Sep	Oct	Nov	Dec
-----	-----	-----	-----	-----	-----	-----	-----	-----	-----	-----	-----

Use plant protection products safely. Always read the label and product information before use.



Ewan Hunter (right) with Stadium Deputy Jeff Farmer

“ Our annual nutrient and disease prevention programme at the City Ground includes Rigby Taylor’s Microlite premium range of NPK-balanced fertilisers, which is complemented by the Nutri-Link range of bio-stimulant liquid sprays. In addition, Ewan uses the Autumn Green Bio fertiliser in autumn and winter and applies fungicides with fertiliser applications throughout the year to keep diseases at bay. Seed of choice is R140 tetraploid perennial rygrasses that works well in colder temperatures and has high disease resistance. ”



Ewan Hunter
Stadium Head Groundsman
Nottingham Forest FC



CHEMICALS

Heritage NEW

A **systemic Strobilurin Fungicide**
for the control of a wide range of
turf diseases



WHY HERITAGE

- › 7 turf diseases on label
- › Broad spectrum systemic activity
- › Outstanding turf safety
- › Active recycling
- › Systemic activity taken up by foliage and roots
- › Control of fairy rings – with Rigby Taylor wetting agent
- › Tank mixable with Trimate or Option and Magnet Velocite to broaden spectrum



How Heritage works

Heritage contains the world's top selling Strobilurin fungicide active ingredient azoxystrobin. The easy to use and measure WDG formulation developed by Syngenta.

Azoxystrobin is absorbed into leaves and sheaths when applied and also moves from the soil into the roots. From the foliage it is moved systemically up throughout the entire plant, providing control of turf diseases for up to 28 days.

The unique root uptake of Azoxystrobin in **Heritage** gives the added advantage of tackling both soil and root diseases. Any azoxystrobin which lands on thatch within the turf sward and washed down into the root zone can be readily taken up by the roots and systemically translocated up through the plant.

With the root uptake and movement of **Heritage**, more of the active is captured and fully utilised by the plant, with less risk of environmental loss into the soil.



Product Detail

Contains: 500 g/kg Azoxystrobin
MAPP No. 13536
Pack size: 100 & 500g
Pack coverage: 2000m² & 1ha
RT order code: 0633120/100 & 0633120/500

APPLICATION RATES			
Equipment	Heritage	Water Volume	Area
Vehicle mounted Hydraulic sprayer	500g	125-1,000 litres	1ha
Knapsack Sprayer	5g	8-10 litres	100m ²

RECOMMENDED PERIOD OF USE

Jan	Feb	Mar	Apr	May	Jun	Jul	Aug	Sep	Oct	Nov	Dec
-----	-----	-----	-----	-----	-----	-----	-----	-----	-----	-----	-----

Use plant protection products safely. Always read the label and product information before use.



CHEMICALS

Heritage Maxx NEW

A **systemic Strobilurin Fungicide** for the control of a wide range of turf diseases



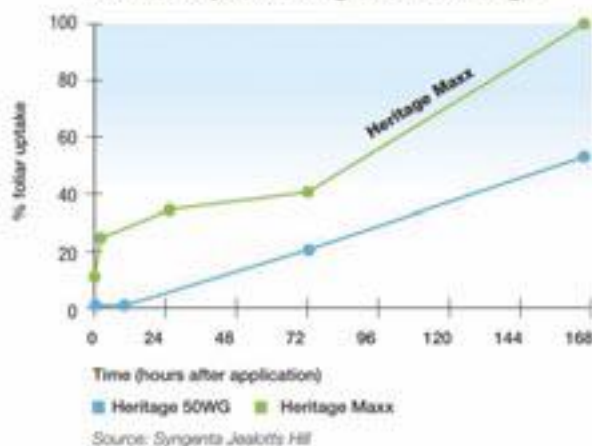
WHY HERITAGE MAXX


- › Broad spectrum systemic activity
- › Outstanding turf safety
- › Active recycling
- › Foliar and soil diseases
- › Systemic activity taken up by foliage and roots
- › Control of fairy rings – with Rigby Taylor wetting agent
- › Tank mixable with Trimate or Option and Magnet Velocite to broaden spectrum

Quicker Uptake

The Maxx formulation developed by Syngenta safely bonds the active onto the leaf surface – quickly making **Heritage Maxx** safe from wash-off by rain or irrigation. The reservoir of active on the leaf surface is then taken up by the plant and quickly gets to work to tackle disease. In trials, 30% of the active from the liquid **Heritage Maxx** formulation had already been absorbed into the plant the day after application, compared to less than 5% with the granular formulation. After 72 hours over 40% of the **Heritage Maxx** was in the plant and working, compared to less than 20% with the granular formulation. For the maximum possible efficacy 100% of the active applied on the leaf was taken up to by the plant a week after application with the liquid **Heritage Maxx** formulation, compared to 60% with the granular formulation.

Uptake of Heritage Maxx is faster and more complete than granular Heritage





Product Detail

Contains: 95 g/l Azoxystrobin
MAPP No. 18246
Pack size: 3 litre
Pack coverage: 12,000m²
RT order code: 0633122/03

APPLICATION RATES			
Equipment	Heritage Maxx	Water Volume	Area
Vehicle mounted Hydraulic sprayer	2.5 litres	125-1,000 litres	1ha
Knapsack Sprayer	2.5ml	8-10 litres	100m ²

RECOMMENDED PERIOD OF USE

Jan	Feb	Mar	Apr	May	Jun	Jul	Aug	Sep	Oct	Nov	Dec
-----	-----	-----	-----	-----	-----	-----	-----	-----	-----	-----	-----

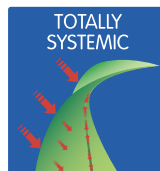
Use plant protection products safely. Always read the label and product information before use.



CHEMICALS

Option

A **unique nutrient based plant stimulant** 3-8-6 NPK liquid including phosphites, fulvic acid, humic acids plus an adjuvant system designed to enhance uptake



WHY OPTION

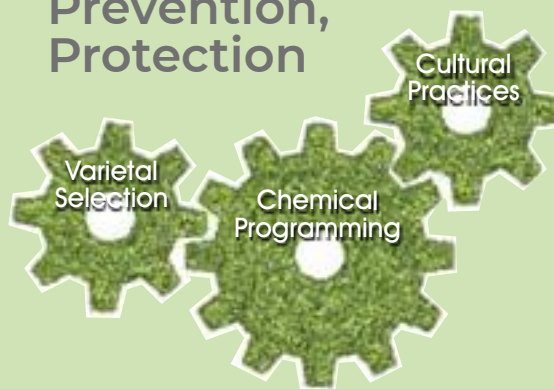
- › Proven to generate enhanced disease control in tank mixtures plus maximum rooting and recovery
- › Formulated with a surfactant system designed to support rapid foliar uptake
- › Fully systemic and taken up by turf within two hours
- › Works rapidly modifying transmission of nutrients and stimulating root growth
- › Prolonged activity in the turf where it will increase root mass and density and encourage tillering, without generating excessive top growth
- › Boosts plants own disease resistance plus reduction of Phytopthera and Pythium species

How Option works

Option has been specifically designed to be tank mixed with fungicides to reduce stress and stimulate the plants own defence system. The product has been widely used under all conditions in the UK on greens, training areas and in stadia. Option is the ideal addition for a tank mix to enhance performance.



Preparation, Prevention, Protection



A healthy turf will always be less susceptible to attack than one that is weak and under stress. It is important to have an 'Integrated Disease Management' (IDM) strategy in place that combines chemical, cultural and varietal practices. The level to which each or any of these are used will vary depending on individual circumstances.



Product Detail

Contains: Phosphites, fulvic acid, humic acids plus an adjuvant system

Pack size: 2 litres

Pack coverage: 10,000m²

RT order code: 0488454/02

APPLICATION RATES			
Equipment	Option	Water Volume	Area
Power Sprayer	2 litres	200-500 litres	1ha

RECOMMENDED PERIOD OF USE											
Jan	Feb	Mar	Apr	May	Jun	Jul	Aug	Sep	Oct	Nov	Dec

Use plant protection products safely. Always read the label and product information before use.



CHEMICALS

TriMate

A stress relief and recovery agent for use with turf fungicides to maximize leaf surface retention, assist plants' natural defences and stimulate recovery from damage



WHY TRIMATE

- › Aid to recovery
- › Enhances fungicide leaf penetration
- › Maximises surface spray retention
- › Stimulates root growth
- › Excellent tank mix properties



How TriMate works

TriMate is a unique combination of biostimulants, plant sugars, leaf penetrant and a foliar 'sticking' agent.


The product has been formulated to aid the fast penetration of biostimulants into the leaf whilst, at the same time, improving coverage on the leaf surface ensuring maximum surface retention of the spray.

Designed to be used in tank mixes with a wide range of fungicides, TriMate's combination of biostimulants and plant sugars assist the plants natural defence mechanisms and stimulates root growth and recovery from damage, improving the performance of tank mixture components.

Trimate can be used with all turf grass fungicides including Exteris, Eland, Dedicate, Medallion, Instrata Elite and Heritage.

Improve Disease Control





Product Detail

Contains: A blend of polyoxyalkylene glycol surfactants and biostimulants

Pack size: 5 litres

Pack coverage: 2,500m²

RT order code: 0420205/05

APPLICATION RATES			
Equipment	TriMate	Water Volume	Area
Power Sprayer	5-20 litres	500 litres	1ha

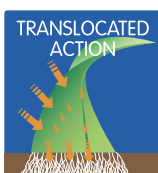
RECOMMENDED PERIOD OF USE											
Jan	Feb	Mar	Apr	May	Jun	Jul	Aug	Sep	Oct	Nov	Dec

Use plant protection products safely. Always read the label and product information before use.



Icade

A **selective herbicide** for effective control of Japanese knotweed, hogweed, marestail, docks, nettles, thistles, ragwort and other tough weeds in amenity grassland



WHY ICADE

- › Effective against tough and invasive weeds
- › Rainfast in 1 hour
- › Safe to grasses
- › Virtually no odour
- › Controls a wide range of woody weeds

How Icade works

Icade is a new and unique herbicide that will provide effective control against difficult to control and pernicious weeds such as Japanese knotweed, hogweed, rosebay willow herb and brambles. In a programme Icade has also shown good control of marestail and horsetail. It's low odour makes it an ideal product to use in areas where public alarm may be generated by smells commonly associated with herbicide application. Rainfast in 1 hour, for total weed control can be tank mixed with glyphosate.



Icade is quickly transported throughout the target weed and is ideal for weed control in such areas as railway and motorway embankments, industrial areas, under powerlines, in cemeteries, utility areas and around groundsmen and greenkeeper sheds.



Product Detail

Contains: 12 g/litre aminopyralid and 120 g/litre of triclopyr
 MAPP No: 19069
 Pack size: 1 litre
 Pack coverage: Spot treatment
 RT order code: 0434105/01

APPLICATION RATES

Equipment	Icade	Water Volume	Area
Knapsack Sprayer	15-20ml	1 litre Medium quality spray	50m ²

RECOMMENDED PERIOD OF USE

Jan	Feb	Mar	Apr	May	Jun	Jul	Aug	Sep	Oct	Nov	Dec
-----	-----	-----	-----	-----	-----	-----	-----	-----	-----	-----	-----

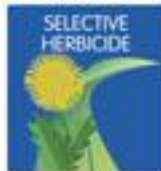
Use plant protection products safely. Always read the label and product information before use.



CHEMICALS

Crossbar

An outstanding **selective broad-leaved herbicide** for managed amenity turf and amenity grassland



WHY CROSSBAR


- Controls many difficult-to-kill turf weeds including Slender Speedwell and Yellow Suckling Clover
- Contains three powerful active ingredients giving broad spectrum activity
- Can be applied on newly sown turf 2 months after sowing
- Excellent grass safety



How Crossbar works

Crossbar contains three powerful active ingredients. Fluroxypyr belongs to the pyridine carboxylic acids group of chemicals and is active at very low dose rates and readily translocated through the target weeds. Dicamba and 2,4-D also work by interrupting plant hormone activity in susceptible weed species.

New turf may be treated in the spring provided that at least two months have elapsed between sowing and treatment.



Product Detail

Contains: 105 g/l fluroxypyr (acid equivalent), 285 g/l 2,4-D (acid equivalent) and 52.5 g/l dicamba

MAPP No: 16454

Pack size: 2 litres

Pack coverage: 1ha

RT order code: 0423335/02

APPLICATION RATES MANAGED AMENITY TURF & GRASSLAND			
Equipment	Crossbar	Water Volume	Area
Power Sprayer	2 litres	200-400 litres	1ha
Knapsack Sprayer	20ml	2-4 litres	100m ²

APPLICATION RATES NEWLY-SOWN AMENITY TURF & GRASSLAND			
Equipment	Crossbar	Water Volume	Area
Power Sprayer	0.95 litres	200-400 litres	1ha
Knapsack Sprayer	10ml	2-4 litres	100m ²

RECOMMENDED PERIOD OF USE

Jan	Feb	Mar	Apr	May	Jun	Jul	Aug	Sep	Oct	Nov	Dec
-----	-----	-----	-----	-----	-----	-----	-----	-----	-----	-----	-----

Use plant protection products safely. Always read the label and product information before use.

Weeds controlled by Crossbar





Junction

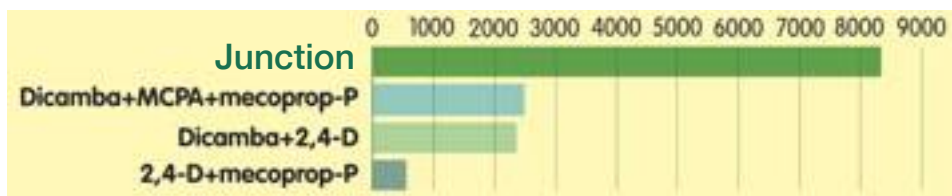
Selective herbicide specially formulated for contractors for control of weeds in sports, amenity turf and amenity grassland



WHY JUNCTION

- › Unique micro-emulsion technology increases herbicidal activity
- › Controls a wide range of common turf weeds
- › Can be used on new grass only two months after sowing

Area treated by 1 litre (m²)



How Junction works

JUNCTION* TURF HERBICIDE uses the power of florasulam to reduce the overall amount of active ingredient applied as required by the Sustainable Use Directive (SUD). This not only minimises the active loading on the environment, but also reduces the amount of product needed to be carried to a job. The florasulam is combined with a low rate of 2,4-D, which broadens the weed spectrum of Junction.

Junction has been cleverly formulated as a suspo-emulsion in water, allowing it to be applied in 100 litres water per hectare. This markedly reduces the time needed to complete a spray operation. Junction can be applied after only 2 months to spring or summer sown turf. In addition, reseedling can be carried out just 4 weeks after application.



Turn right for more efficient weed control!



Product Detail

Contains: Florasulam and 2,4-D
MAPP No: 12493
Pack size: 5 litres
Pack coverage: 41,667m²
RT order code: 0423400/05

APPLICATION RATES			
Equipment	Junction	Water Volume	Area
Power Sprayer	1.2 litres	100-400 litres	1ha
Knapsack Sprayer	12ml	10 litres	100m ²

RECOMMENDED PERIOD OF USE

Jan	Feb	Mar	Apr	May	Jun	Jul	Aug	Sep	Oct	Nov	Dec
-----	-----	-----	-----	-----	-----	-----	-----	-----	-----	-----	-----

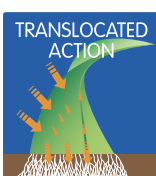
Use plant protection products safely. Always read the label and product information before use.



CHEMICALS

Pivotal

A liquid **selective broad-leaved weed herbicide** for the control of many annual and perennial weeds in grassland and managed amenity turf and amenity grassland



WHY PIVOTAL

- › Excellent control of a wide range of broad-leaved weeds in grassland
- › Translocated to roots ensuring long-term control
- › No impact on grass growth following application
- › Rainfast in just two hours
- › Use in amenity grassland, e.g. airfields, railways, road embankments, paddocks

How Pivotal works

Pivotal contains two powerful active ingredients, fluroxypyr and triclopyr.

Fluroxypyr belongs to the pyridine carboxylic acid chemical group and is active at very low dose rates and is readily translocated through the target weed. Triclopyr is a systemic, foliar herbicide in the pyridine group. It is used to control broadleaf weeds while leaving grasses unaffected.

Apply using a medium quality spray when weeds are actively growing, preferably before they begin to flower. Pivotal provides 'best in class' control of difficult to control species as well as a huge range of broad-leaved weed species. Request the Pivotal 'RTechnical' sheet for full listing.

Example of weeds controlled by Pivotal

Annual weeds	Perennial weeds
Chickweed	Bramble
Cleavers	Broom
Corn marigold	Ground ivy
Cranesbill	Dandelion
Field bindweed	Docks
Groundsel	Nettles
Medick	Ribwort plantain





Product Detail

Contains: 150g/l Triclopyr, 150g/l fluroxypyr

MAPP No: 16943

Pack size: 5 litres

Pack coverage: 2.5ha

RT order code: 0422457/05

APPLICATION RATE – Overall treatment			
Equipment	Pivotal	Water Volume	Area
Power sprayer	2 litres	200-400 litres	1ha

RECOMMENDED PERIOD OF USE

Jan	Feb	Mar	Apr	May	Jun	Jul	Aug	Sep	Oct	Nov	Dec
-----	-----	-----	-----	-----	-----	-----	-----	-----	-----	-----	-----

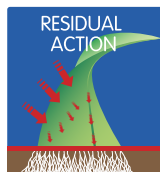
Use plant protection products safely. Always read the label and product information before use.



CHEMICALS

Chikara

A residual, broad spectrum,
total herbicide for long-term
weed control



WHY CHIKARA

- › Pre-emergent and early post-emergent weed control
- › Tank mixable with other herbicides to control large emerged weeds
- › Up to 5 months residual activity
- › Low application rate – cost effective control

How Chikara® works

Chikara provides control of emerging and early post emergent broad-leaved annual and shallow rooted perennial weeds and grasses. It's highly residual activity is effective for up to 5 months. Where weeds are established at the time of application, always tank mix Chikara with the appropriate rate of Kantoun Gold or an approved glyphosate formulation.

Chikara may be used on any porous surface, where total weed control is required.

Areas of use include Fence lines * Around trees * Around buildings * Industrial sites * Oil and gas storage sites * Power stations * Electric sub-station * Beneath pylons * Park obstacles and furniture.

Due to the potential for run-off into surface waters Chikara must **not be used** on non-porous man-made surfaces, e.g. paved areas, concrete, tarmac car parks and footpaths. Chikara may be used in and around amenity vegetation.

Cost effective weed control – the real savings

Chikara offers local authorities and contractors a positive way of reducing costs, whilst maintaining effective weed control.

Comparing the costs of season long control of weeds with Chikara, compared to multiple visits for strimming and/or repeat spray applications of glyphosate, there are potentially major savings to be made.

Application/Operation	Cost per sq. metre (average purchase/labour cost)
1 x Chikara + glyphosate* treatment	4 pence
3 x glyphosate only treatments	7 pence
12 x strimming operations	84 pence
1 x Chikara plus Katoun Gold treatment*	6.7 pence

Compared to strimming a massive saving of 0.80p/m² or £8,000/ha is achieved!

* Required where there is existing vegetation



Product Detail

Contains: 25% w/w flazasulfuron (250g/kg)
MAPP No: 14189
Pack size: 50g, 150g
Pack coverage: 50g: 0.33ha
150g: 1ha
RT order code: 50g: 0488375/50
150g: 0488380/150

APPLICATION RATES

Equipment	Chikara	Water Volume	Area
Power Sprayer	150g	200-600 litres	1ha
Knapsack Sprayer	15g	15 litres	1,000m ²

Use plant protection products safely. Always read the label and product information before use.





At your surface.

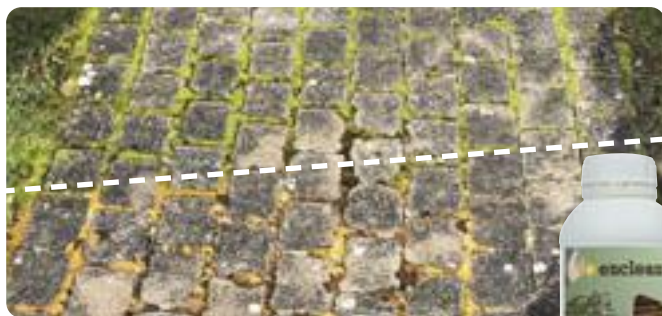


KATOUN[®] GOLD



Rid small weeds on bare soil around trees and on other permeable surfaces

Katoun Gold is a fast acting, natural origin weedkiller. An excellent tank mixed partner with Chikara or glyphosate formulations such as Mascot Hi-Aktiv. Or with the herbicide Icade, enhanced control of Mares Tail and Ivy is achieved.



enclean[®]

Wipe out algae, lichens and bacteria from all hard surfaces

Enclean is a superb new sustainable biocide for the removal of algae from a wide range of hard surfaces. Fast acting and long lasting, with visible results in just a few hours.



Chikara

Stamp out annual and perennial weeds and grasses for up to 5 months

Chikara provides residual control of emerging and early post-emergent weeds from a single application. Can be used on any porous surface where total weed control is required. The low application rates make Chikara a very cost effective control.





Katoun Gold

A natural origin, **total herbicide** for the control of small weeds on amenity vegetation, bare soil around trees and on permeable surfaces



WHY KATOUN GOLD

- › Non-glyphosate natural origin product
- › Very fast acting – less than 2 hours
- › Tank mixable with Chikara and other residual herbicides
- › Speeds up activity of glyphosate
- › Use in water for initial line marking
- › Can be applied in low water volumes compared to other glyphosate alternatives

How Katoun Gold works

Katoun Gold causes the destruction of the plant cuticle and cell wall resulting in very rapid desiccation and peroxidation of the cells. It can be used to control young weeds in many situations via contact action.


Applied at 22.5 l/ha in 225l of water using twin fan nozzles.

Produces excellent result when tank mixed with Chikara as a replacement for glyphosate.

Excellent performance and wide spectrum of weed control when tank mixed with other herbicides:

Examples:

- › Glyphosate speeds up activity and spectrum on perennial weeds
- › Icade enhances mares tail and ivy control



Product Detail

Contains: 500 g/l pelargonic acid
 MAPP No: 17879
 Pack size: 5 litres
 Pack coverage: 2,220m²
 RT order code: 0488290/05

APPLICATION RATES											
Equipment	Katoun Gold	Water Volume	Area								
Power Sprayer	22.5 litres	200-500 litres	1ha								
Knapsack Sprayer	1 litre	10 litres	444m ²								

RECOMMENDED PERIOD OF USE
When applied alone on soft growth

Jan	Feb	Mar	Apr	May	Jun	Jul	Aug	Sep	Oct	Nov	Dec
-----	-----	-----	-----	-----	-----	-----	-----	-----	-----	-----	-----

RECOMMENDED PERIOD OF USE
As a tank mix (depending on product)

Jan	Feb	Mar	Apr	May	Jun	Jul	Aug	Sep	Oct	Nov	Dec
-----	-----	-----	-----	-----	-----	-----	-----	-----	-----	-----	-----

Use plant protection products safely. Always read the label and product information before use.





CHEMICALS

Maintain NT

A **plant growth regulator** that produces a more dense, healthier sward and improved root mass. Can reduce the frequency of mowing operations



WHY MAINTAIN NT

- › Improved sward density
- › Reduced mowing frequency
- › Increased root mass
- › Improved turf colour and strength
- › Enhanced resistance to stress
- › For difficult/hazardous to mow areas




How to use Maintain NT

Maintain NT is a management tool designed to allow a more flexible use of available labour and better deployment of limited resources, the reduction of fuel costs and machinery wear and, most importantly, produces superb turf.

The action of Maintain NT redirects grass growth by specifically targeting the gibberellic acid site responsible for cell elongation.

Such action not only inhibits vertical growth but diverts it downwards into the root system where it helps to produce and increase food reserves and lateral stem development. The result is the production of a thicker, healthier sward that allows turf to better withstand stress caused by temperature extremes, moisture loss, traffic and wear. An added benefit is that helps in the management of *Poa annua*.



Product Detail

Contains: Trinexapac-ethyl
Pack size: 5 litres
MAPP No: 18736
Pack coverage: Variable
RT order code: 0421333/05

APPLICATION RATES			
	Greens	Tees	Fairways & Amenity
Frequency	Every 2-4 week	Every 3-5 weeks	Every 4-6 weeks
Height of cut	<7mm	10-18mm	<18mm
Dose rate	0.2-0.4 l/ha	0.8-1.6 l/ha	0.8-1.6 l/ha
Rough & Semi-rough		Winter Sports	
Frequency	Every 5-8 weeks	Every 4-6 weeks	
Height of cut	>18mm	>10mm	
Dose rate	up to 2.4 l/ha	0.8-1.6 l/ha	

RECOMMENDED PERIOD OF USE

Jan	Feb	Mar	Apr	May	Jun	Jul	Aug	Sep	Oct	Nov	Dec
-----	-----	-----	-----	-----	-----	-----	-----	-----	-----	-----	-----

Use plant protection products safely. Always read the label and product information before use.



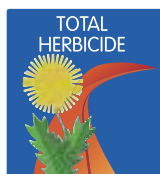


Grass Growth Management
Case Study and Cost
Comparison booklet available
on request 0800 424 919



CHEMICALS

Mascot Hi-Aktiv Amenity



A high-loading **glyphosate herbicide** for control of annual and perennial grasses and most broad-leaved weeds in amenity, industrial, forestry and aquatic areas

WHY MASCOT HI-AKTIV AMENITY

- › New generation BEAT system improves plant uptake to give excellent weed control
- › Advanced formulation giving 36% more herbicidal activity per litre
- › Efficient uptake gives good long-term weed control
- › Can plant or cultivate from 24 hours after application for annual weeds, and 5 days for perennial weeds



Aktiv against grasses and bracken



How Mascot Hi-Aktiv Amenity works

Mascot Hi-Aktiv Amenity is the first non-irritant, high concentration glyphosate in Europe with full surfactant loading. This BEAT technology combines new standards of performance whilst being more environmentally friendly than other more traditional formulations.



Mascot Hi-Aktiv Amenity can be used in a variety of situations including around buildings, industrial sites, on pavements, public paths and roadway verges and for site preparation. Can also be applied at low water volumes. It can be used in land preparation for planting, for cleaning-up around trees, for cut stump application and by stem injection.

Hi-Aktiv Amenity can also be used to control a variety of aquatic weed species – waterside weeds, emergent weeds (including Reeds, Rushes, Sedges, Grasses and Watercress) and floating weeds (White Water-lily and Yellow Water-lily).

Product Detail

Contains: 490g/l (660g/l IPA) glyphosate
MAPP No: 17696
Pack size: 5 litres
Pack coverage: Uncropped land: 1.14 -4.55ha
Forestry: 0.68-2.27ha
Aquatic: 1.14-1.35ha

RT order code: 0488270/05

◆ Application rates for Forestry, Industrial and Amenity situations are too extensive to show here. Please refer to the product label.

RECOMMENDED PERIOD OF USE

Jan Feb Mar Apr May Jun Jul Aug Sep Oct Nov Dec

Use plant protection products safely. Always read the label and product information before use.



Aktiv against annuals, perennials and aquatic weeds





Aktiv against bramble, grasses, annual, perennial and aquatic weeds



**The first foliar applied,
non-irritant, high
concentration glyphosate
featuring BEAT
technology with full
surfactant loading**

- ▶ New generation BEAT system gives more herbicidal activity per litre
- ▶ Hazard-free label – safer to operators, public and the environment
- ▶ Improved plant uptake for enhanced weed control
- ▶ Provides superior long-term weed control of difficult perennial weeds
- ▶ Can plant or cultivate from 24 hours following application

MASCOT
Hi-Aktiv
AMENITY THE BEAT GOES ON



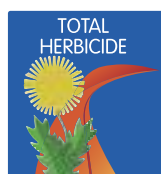
For more detailed information visit: www.rigbytaylor.com
Freephone: 0800 919 424 E-mail: sales@rigbytaylor.com



CHEMICALS

Gallup Biograde Amenity

A foliar-applied translocated **glyphosate herbicide** for the control of emerged weeds in amenity and industrial situations, forestry and aquatic areas



WHY GALLUP BIOGRADE AMENITY

- › Can be used any time of year when weeds are green and actively growing
- › Non-hazardous COSHH classification
- › Bio-degraded by soil micro-organisms
- › Can be used for aquatic weed control
- › BioEnhance™ Adjuvant Technology



Aquatic Weed Control

Gallup Biograde Amenity can be used for the control of waterside and emergent weeds including Reeds, Rushes, Sedges, Grasses and Watercress, and against the floating weeds White Water-lily and Yellow Water-lily. As with any aquatic herbicide, prior approval should be sought from appropriate authorities.



How Gallup Biograde Amenity works

The active ingredient glyphosate acts by blocking the plant's enzymatic system. The BEAT formulation ensures the herbicide is readily absorbed through the leaf cuticle and is able to circulate throughout the plant and right down to the roots. As a result not just the foliage but the whole of the plant is killed.



Gallup Biograde Amenity is adsorbed easily onto the soil particles so does not leach and is also broken down by the soil bacteria into harmless natural substances.





Product Detail

Contains: 360g/l (30.7% w/w) glyphosate
MAPP No: 17674
Pack size: 5 litres
Pack coverage: Uncropped land: 8,333-12,500m²
Forestry: 5,000-10,000m²
Aquatic: 8,333-10,000m²
RT order code: 0488276/05

RECOMMENDED PERIOD OF USE

Jan	Feb	Mar	Apr	May	Jun	Jul	Aug	Sep	Oct	Nov	Dec
-----	-----	-----	-----	-----	-----	-----	-----	-----	-----	-----	-----

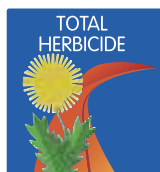
Use plant protection products safely. Always read the label and product information before use.



CHEMICALS

Discmann CDA Biograde

A unique ready-to-use **CDA glyphosate herbicide** for control of emerged weeds in amenity and forest areas, and near water



WHY DISCMAN CDA BIOGRADE

- › Non-residual herbicide with a high concentration non-hazard glyphosate
- › Controls annual and perennial grasses and broad-leaved weeds
- › RTU – no water, no mixing, no overdosing
- › Unique non-irritant, biograde formulation giving greater efficacy
- › Low standard application rate – 7 l/ha
- › Non-hazardous COSHH classification
- › Eliminator lance for easy application



Product Detail

Contains: 216 g/l glyphosate
MAPP No: 12856
Pack size: 5 litres
Pack coverage: 5,000-7,142m²
RT order code: 1588700/

APPLICATION RATES

Target Weed	Discman CDA Biograde	Area
Light vegetation and annual weeds	7 litres	1ha
Established deep-rooted annuals, perennial grasses and broad-leaved weeds	10 litres	1ha
Forestry/woodlands: Before planting – to control broad-leaved and grass weeds	8.5 litres	1ha

RECOMMENDED PERIOD OF USE

Jan Feb Mar **Apr** **May** **Jun** **Jul** **Aug** **Sep** Oct Nov Dec

Use plant protection products safely. Always read the label and product information before use.



How Discman CDA Biograde works

Discman CDA Biograde is a breakthrough in formulation chemistry, being the first non-irritant high concentration glyphosate in Europe that has a full surfactant loading, BEAT, without using tallow amines. The formulation speeds up the penetration process and improves rainfastness by better adhesion on to the leaf surface. Consequently more glyphosate is able to penetrate into the plant tissue and translocate down to the roots resulting in a more rapid and effective kill of the weed.



The high concentration of glyphosate (216g/l), linked to a low application rate, making it extremely effective and very cost efficient.

Discman CDA Biograde can be used through the Eliminator Lance by simply connecting the herbicide bottle directly onto the lance. A peristaltic pump is built into the sprayer providing a consistent application rate with an optimum droplet size. The sprayer is self-calibrating so overdosing is eliminated.

How to use Discman CDA Biograde

Discman CDA Biograde must be applied with CDA equipment with an approved droplet spectrum (VMD min 200 microns). Choose a disc with a spray pattern appropriate to the task in hand.

Discman CDA Biograde may be used on land immediately adjacent to aquatic areas.



CHEMICALS

EGC Amenity

The only CRD approved **nematicide** in the UK for protecting golf greens, soccer pitches and all sports and amenity turf

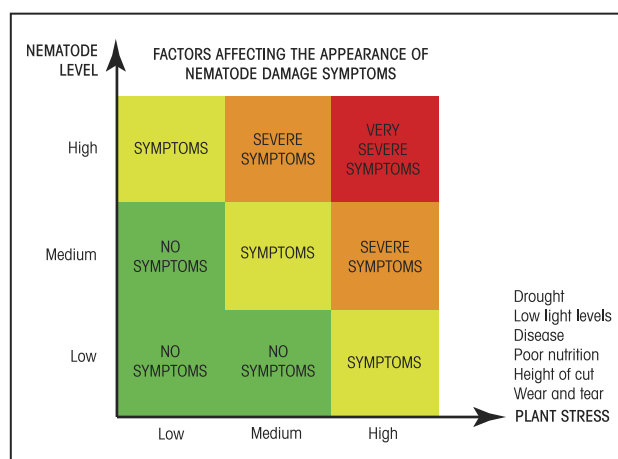


WHY EGC AMENITY

- ▶ Laboratory tests have shown rapid kill of all plant parasitic nematodes
- ▶ Significantly reduces ectoparasitic and endoparasitic nematodes in turf
- ▶ Available now in both liquid and granular formulations



The nematodes use their feeding spear (stylet) to pierce plant root cells and feed on cell contents



Product Detail

Contains:	Polysulphides
MAPP No:	Liquid: 17852 Granule: 17233
Pack size:	Liquid: 5 litres Granule: 20kg
Pack coverage:	Liquid: 2,500m ² Granule: 833-1,666m ²
RT order code:	Liquid: 0525001/05 Granule: 0525001/020

APPLICATION RATES – Liquid applied at 50ml/m²

Equipment	EGC Liquid	Water Volume
Hand Sprayer/Watering Can	400ml	10 litres
Tractor Sprayer	Prepare at 4% v/v dilutions	

APPLICATION RATES – Granular formulation

Equipment	EGC Granule	Area
Rotary spreader	12kg	1,000m ²
Rootzone incorporation	24kg	1,000m ²

RECOMMENDED PERIOD OF USE

Jan	Feb	Mar	Apr	May	Jun	Jul	Aug	Sep	Oct	Nov	Dec
-----	-----	-----	-----	-----	-----	-----	-----	-----	-----	-----	-----

Use plant protection products safely. Always read the label and product information before use.

How EGC Amenity works

Damage to sports and amenity turf by plant parasitic nematodes is a major problem. The symptoms are severe chlorosis, leading to turf loss.

Reducing nematode populations can quickly promote an increase in turf quality and performance. Currently **EGC Amenity** is the only nematicide in the UK that is approved for use on sportsfields and amenity turf areas.

EGC Amenity contains polysulphides which react with enzymes in animal cells and have a potent effect against insect eggs and plant parasitic nematodes. It kills all types of nematodes on contact.

The liquid formulation is applied as a drench to penetrate the turf surface where nematode-induced damage is apparent, or nematode population in soil exceeds the desired thresholds.

The granular formulation, when applied during seeding or on established turf, must be irrigated-in to activate its ingredients. This ensures longer term activity. Alternatively, the granules can be mixed with the root zone during construction.

If in doubt seek expert advice from your local Rigby Taylor representative.



CHEMICALS

Rigby Taylor

Lawn Sand

Micronised, **dual action fertilizer** and moss control with rapid green up



WHY MICRONISED LAWN SAND

- › Dual action fertilizer and moss control, giving a rapid green-up
- › Grass growth encouraged to infill bare areas left after moss control
- › Acidifying effect helps deter earthworm casting
- › Ferrous sulphate will help harden turf against turf grass diseases e.g. Fusarium Patch
- › No requirement for PA Certificate

How Lawn Sand works

Micronised Lawn Sand is a mini-granular lawn sand formulation for moss control in sports and amenity turf areas, and domestic gardens. Control moss and promotes turf growth which will then rapidly infill the bare areas left after moss removal.

Nurture

Triple action micronised **feed, weed and moss killer**



WHY NURTURE

- › Triple action fertilizer – weed and moss control, plus a rapid green-up
- › Grass will rapidly regrow to fill bare areas left after weed and moss removal
- › Acidifying effect helps deter earthworm casting
- › Will help harden turf against turf grass diseases e.g. Fusarium Patch and enhance colour
- › No requirement for PA certificate

How Nurture works

Nurture is a compound fertilizer for weed and moss control in sports, amenity turf areas and domestic gardens. Controls problem weeds, moss and promotes turf growth which will then rapidly infill the bare areas left after moss removal.




Product Detail

Contains: 14.1% FeSO₄
MAPP No: 17031
Pack size: 20kg bag
Pack coverage: 250m²
RT order code: 0423310/020

APPLICATION RATE		
Equipment	Rigby Taylor Lawn Sand	Area
	800kg	1ha
Any suitable fertilizer spreader	40kg	500m ²
	80g	1m ²

Use plant protection products safely. Always read the label and product information before use.



Product Detail

Contains: 10-2-2 + dicamba + mecoprop-P + 2-4D + 8% Fe
MAPP No: 19023
Pack size: 20kg bag
Pack coverage: 625m²
RT order code: 0103253/020

APPLICATION RATE		
Equipment	Nurture	Area
	320kg	1ha
Any suitable fertilizer spreader	16kg	500m ²
	32g	1m ²

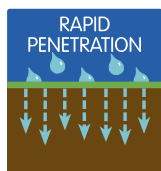
Use plant protection products safely. Always read the label and product information before use.



CHEMICALS

Clearcast Green

Combined formulation of nutrients and surfactants that **reduce worm castings on turf** surfaces by deterring their movements through treated soil



WHY CLEARCAST GREEN

- › Beneficial non-casting worms are largely unaffected
- › Rain or irrigation following application will not reduce effectiveness
- › Safe to a wide range of turfgrass species



How ClearCast Green works

Scientific evaluation has shown that ClearCast Green does not kill worms or reduce populations, but does deter them from travelling through the treated soil. Its unique surfactant system holds the ingredients, antagonistic to the worms, in the upper soil structure and fixes them there providing good persistence of deterrent effect until breaking down to products naturally absorbed by plants.

ClearCast Green can be used with absolute safety from first tiller formed on new sown turfs at low rates. It can be applied year-round on established turf. Best results and longer persistency are obtained in cool soil conditions.



Product Detail

Contains: Nutrient complex and surfactants
 Pack size: 10 litres
 Pack coverage: 5,500m²
 RT order code: 0632107

APPLICATION RATES

Equipment	ClearCast Green	Water Volume	Area
Power sprayer	20 litres	250 litres (min)	1ha

- ◆ Initial application at 20 litres/ha, followed 21 days later a further application at 10 litres/ha
- ◆ If further applications required, apply at 10 litres/ha at 10-20 day intervals
- ◆ Apply as coarse spray quality
- ◆ Do not mix with water conditioners or products that acidify spray water

RECOMMENDED PERIOD OF USE

Jan	Feb	Mar	Apr	May	Jun	Jul	Aug	Sep	Oct	Nov	Dec
-----	-----	-----	-----	-----	-----	-----	-----	-----	-----	-----	-----

Use plant protection products safely. Always read the label and product information before use.





CHEMICALS

Trailblazer Trio



A temporary blue, **tank mix colourant** that highlights spray overlap and missed areas. Contains water conditioners and anti-drift agent.

WHY TRAILBLAZER TRIO

- › Highlights spray on target surface
- › Appears as a dark green colour on turf
- › Colour is temporary, low staining
- › Contains water conditioner/softener
- › Tank mix compatible
- › Drift reduction

How Trailblazer Trio works

When added to the spray solution, operators can see the pattern of the spray, thereby reducing up to 20% costly and wasteful overlap. A more targeted spray application provides a better spray performance

Missed areas are also immediately identified. A water conditioner and softener are included to lock-up carbonates in the spray solution that reduce chemical effectiveness and neutralize cations which cause adverse reactions with pesticides.

Watercondition-R



Acidifies and **reduces water hardness**

WHY WATERCONDITION-R

- › Improves performance of pesticides and micronutrients
- › Softens irrigation water
- › Use in knapsacks and boom sprayers
- › Ideal for use with glyphosate, selective herbicides, foliar nutrients, liquid fertilizer and fungicides


How Watercondition-R works

This product has 3 modes of action:

1. An acid that dissolves the carbonates in the spray solution and reduces the ability to react with pesticides or micronutrients.
2. Water softeners – widely used in the water treatment industry to neutralise carbonates so they are not able to further react with pesticides or micronutrients.
3. A buffer that regulates the pH of the spray tank or irrigation solution to a slightly acidic solution. Ideal for nutrient and pesticide uptake by the plant.

By conditioning water prior to addition of pesticide or nutrients antagonism from impurities in the water are removed and the products are applied in a pH of approximately 5.0 which optimizes uptake.


Use of **Condition-R** should be part of normal practice on every spray application to enhance performance.



Product Detail

Pack size: 1 litre
Pack coverage: Makes 1,000 litres of spray solution
RT order code: 0423944/01

APPLICATION RATES		
Formulation	Trailblazer Trio	Spray Solution
Liquid	20-50ml	20 litres
	1-2.5 litres	1,000 litres



Product Detail

Pack size: 5 litres
Dose Rate: 250-500ml per 100 litres spray water
Pack coverage: Variable
RT order code: 0423860/05

APPLICATION RATES		
Formulation	Watercondition-R	Spray Solution
Liquid	250ml	100 litres
	25ml	10 litres



Clearspray



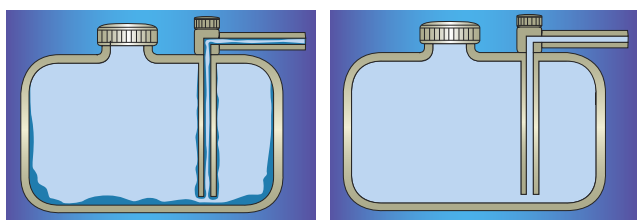
Spray tank cleaner that removes residues of all amenity pesticides, including glyphosate

WHY CLEARSpray

- › Effective against all amenity pesticide residues, including total herbicides such as glyphosate
- › For all spray tank cleaning operations on all equipment types

How Clearspray works

Effective spraying relies on clean spray equipment which is free from residue build-up. The powerful blend of detergents in Clearspray removes pesticide deposits and other oily substances from tanks, filters, booms, hoses and nozzles.



Foamcheck



Spraying aid with fast action against products that foam when filling spray tank, especially effective with wetting agents

WHY FOAMCHECK

- › Rapid de-foaming action
- › Especially effective when using wetting agents
- › Reduces spray tank filling time

How Foamcheck works

Excessive foam production can be a problem when preparing amenity sprays, particularly when using highly concentrated solutions or those that contain surfactants e.g. wetting agents. Whilst the foam itself is generally harmless, it may give problems in preventing spray tanks from being filled properly or the equipment being accurately calibrated.

When Foamcheck is added to the spray tank, forces of attraction within the foam are broken and the surface tension of the solution is significantly reduced, resulting in rapid foam knockdown whilst also preventing the build-up of further foam.



Product Detail

Pack size: 1 litre
Pack coverage: Variable
RT order code: 0420200/01

APPLICATION RATES	
Spray tank Capacity	Clearspray
20l	100ml
100l	500ml
250l	1.25 litres
500l	2.5 litres



Product Detail

Pack size: 1 litre
Pack coverage: Variable
RT order code: 0420200/01

APPLICATION RATES	
Spray Tank Capacity	Foamcheck
300-400l	1-2 squirts



CHEMICALS

Ecoplug Max



Simple, non-spray method of **tree stump regrowth control**

WHY ECOPLUG MAX

- › The new effective way to solve a 'growing' problem
- › Each Ecoplug Max contains 300mg of formulated glyphosate herbicide

How EcoPlug Max works

Ecoplug Max provides a simple and effective way to kill the root system of tree stumps with no effect on surrounding trees. The plug contains a herbicide, which is enclosed within a plug. When inserted into the tree stump, the herbicide is released which results in the kill of the entire root system. Because the herbicide is contained within the tree stump, it has no effect on surrounding trees or vegetation and, will not affect humans, animals or the wider environment.

Ecoplug Max has a high efficacy rating of 95-100% and its selective method of herbicide release will reduce the use of chemicals by 90%, compared to traditional methods.



Product Detail

Contains: 300mg glyphosate (each plug)
MAPP No: 17581
Pack size: Box of 100 plugs
RT order code 0488260.

Use plant protection products safely. Always read the label and product information before use



“ Getting the robot line marker is quite innovative for us and we're pleased the club gave us the support,” Pete says. “We now take the TinyLineMarker Sport to mark out twice a week at each site – it's used on the first team training ground on a Monday and Thursday, and the academy on a Tuesday and Friday. If there's only one lad at the academy site, he can just set it off while he gets on with the cutting or vertidrainning - it's definitely helping us a lot. ”



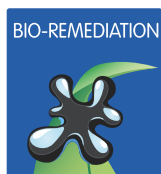
Peter Ashworth
Head Groundsman
Preston North End FC



CHEMICALS

RT Remediact

A concentrated microbial **bio-remedial, hydrocarbon agent** for mitigating and remediating the damage caused by fuel or oil spills on turf and soil



WHY RT REMEDIACT

- › Applied directly to turf after fuel or oil spill – detoxifies the spill and allows grass recover or reseed
- › Rapidly breaks down hydrocarbons including, oil, diesel, petro and hydraulic oil
- › Non-Hazardous
- › Easy to use
- › Harmless to grass – pH neutral – Biodegradable
- › Economical 1 litre pack

How to use RT Remediact

Spills on Turf

Spray diluted product liberally at 1 litre of spray per 10 litres of water as soon as possible after spill.

Soils

For larger spills or leaks from tanks etc., Remediact can be applied to contaminated soil and remediation can take place in situ. This saves cost of haulage and contaminated waste disposal.

For more details contact your Rigby Taylor representative.



Rockliffe Hall Golf Course - 6th fairway

Oil leak contaminated fairway. Treated with Remediact

24th July

Turf recovery 27 days after treatment

20th August

Turf recovery 40 days after treatment

3rd September

The result of contaminated fairway left untreated 40 days after oil leak occurred

Product Detail

Contains: Naturally occurring micro-organisms, with specially formulated bio-surfactants

Pack size: 1 litre

Pack coverage: Variable

RT order code: 0105163/01

RECOMMENDED PERIOD OF USE

Jan Feb Mar Apr May Jun Jul Aug Sep Oct Nov Dec

Use plant protection products safely. Always read the label and product information before use.

User experience:

"Following an hydraulic oil leak on our 6th fairway, we applied Remediact about 1 hour after the leak was noticed. Although the grass started to show damage due to the heat from the oil, the contaminated area over the following days started to recover, repair and return to its natural colour. There were no bare areas and although still slightly visible after 40 days, there was no further action required. The results were phenomenal!"

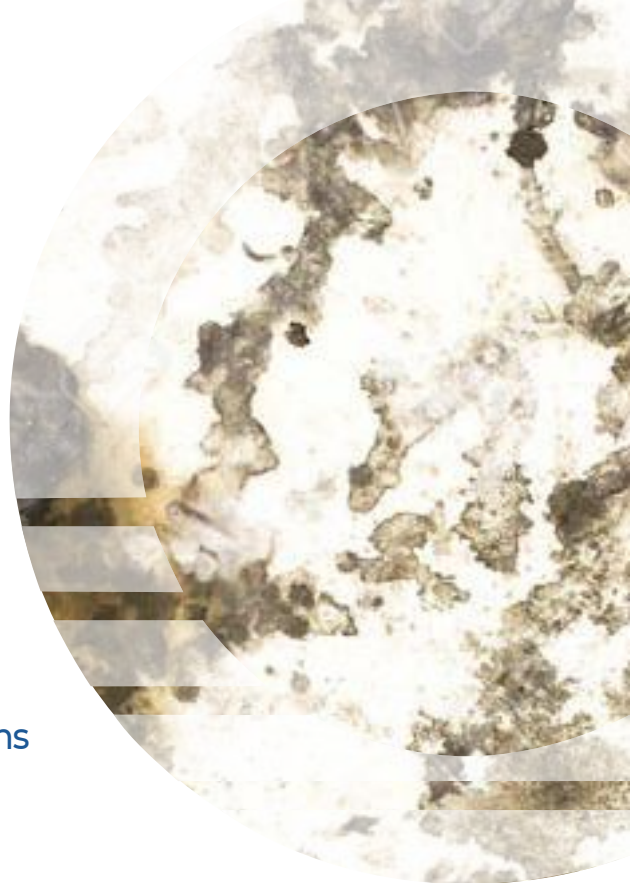
Rockliffe Hall Golf Club
Course Manager
Jon Wyre



CHEMICALS

RT FleetKleen

A combination of **microbes** and a **powerful organic degreaser** cleaning agent designed for use on hard surfaces and equipment



WHY RT FLEETKLEEN

- › Bio-remediates surface areas, interceptors and drains
- › Ideal for washing off equipment
- › Removes stains and oil/fuel from hard surfaces
- › Removes slip risk from spills
- › Decontaminates vans and vehicles after fuel/oil spill
- › Applied via power sprayer or pressure washer

How to use RT FleetKleen

Dilute 100ml concentrate with 2 litres of water for conventional pressure sprayers. For power washers dilute 100ml in 3 litres of water

Liberal spray the contaminated area or equipment then leave for 5-10 minutes. On flat surfaces use stiff brush to aid removal then rinse area. For stubborn stains repeat the procedure.

Target application rate is 1 litre of diluted spray per 10m².



Oil spill before treatment



Oil spill after treatment - scrubbed residue washed into interceptor



Product Detail

Contains: Naturally occurring micro-organisms, with specially formulated bio-surfactants

Pack size: 4 litres

Pack coverage: Up to 400m²

RT order code: 0105164/04

RECOMMENDED PERIOD OF USE

Jan Feb Mar Apr May Jun Jul Aug Sep Oct Nov Dec

Use plant protection products safely. Always read the label and product information before use.