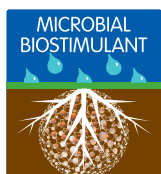
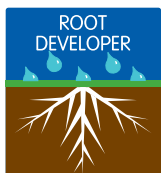
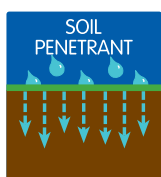
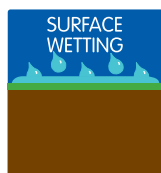


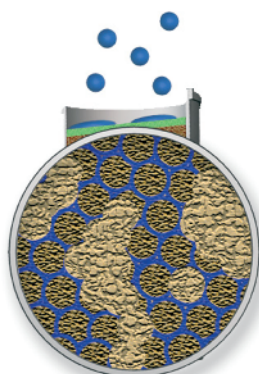
BREAKER BIOLINKS

Wetting agent – Dry Patch and root regeneration in one application

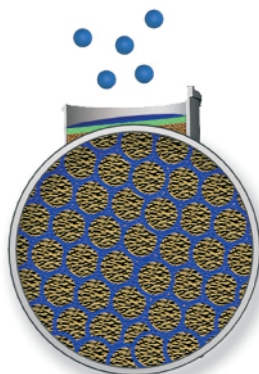


WHY BREAKER BIOLINKS

- » Curative and preventative activity against Dry Patch – as confirmed by STRI
- » A proven solution for water management problems in turf
- » Combats summer stress
- » Balances soil moisture content
- » Improves turf colour and quality
- » Contains natural phytohormones



Standard Wetter Partial Immersion:
Many soil particles remain untreated



Breaker BioLinks Complete Immersion:
Every soil particle becomes treated

How Breaker BioLinks works

Complete Immersion Technology

Built upon the success of **Breaker Dynamic**, with its Complete Immersion Technology, **Breaker BioLinks** offers increased curative powers against Dry Patch and enhanced soil moisture management.

Advanced triple action

A powerful three-way combination that provides rapid wetting of the surface, a penetrant to drive the active ingredient down into the root zone and a third ingredient ensures the soil profile retains a re-wetting ability.

Integrated source of plant growth hormones

The **Breaker BioLinks** formulation stimulates root regeneration and provides natural moisture retention. It is the proven answer to Dry Patch and water-related problems on all turf surfaces, especially links golf courses and other sand based rootzones.

- * Programmed approach – virtually eliminates water repellancy
- * Excellent rootzone penetration – fast re-wetting
- * Promotes strong root growth, sward strength and colour
- * Achieves dry surface whilst maintaining soil moisture balance

Product Detail

Pack size: 12.5 litres
Also available in 120 and 200 litre drums

Pack coverage: 5,000 sq.m

RT order code: 0423900/012

APPLICATION RATES

Area of use	Breaker BioLinks	Water Volume	Area
Golf greens, golf tees	1.25 litres	35-45 litres	500m ²
Bowling greens,	3.75 litres	105-135 litres	1,500m ²
Golf fairways, sportsfields	25 litres	700-900 litres	1 ha

RECOMMENDED PERIOD OF USE

Jan	Feb	Mar	Apr	May	Jun	Jul	Aug	Sep	Oct	Nov	Dec
-----	-----	-----	-----	-----	-----	-----	-----	-----	-----	-----	-----

Use plant protection products safely. Always read the label and product information before use

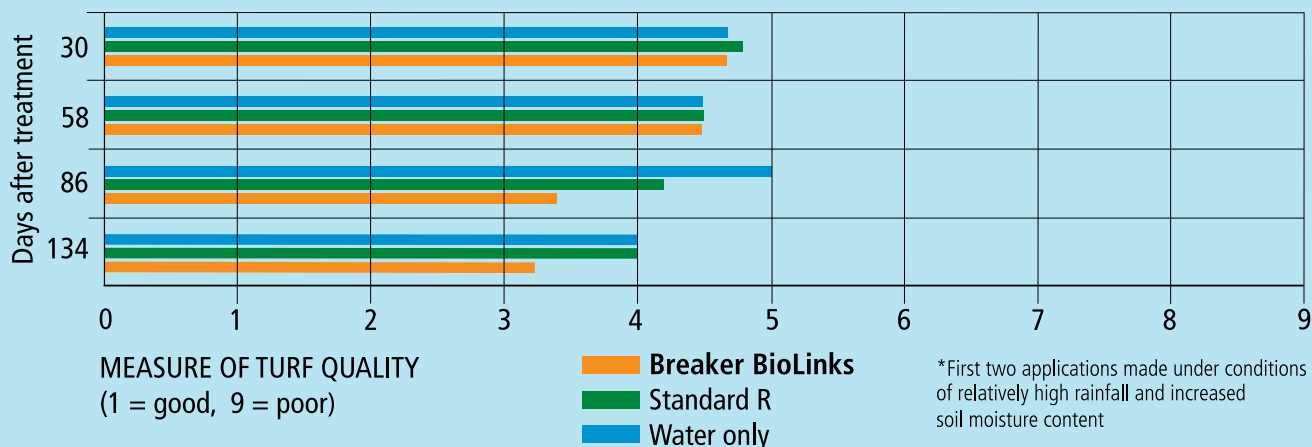
STRI results prove it!

Independent research carried out by the STRI in 2009 which included leading wetting agents, showed that Breaker BioLinks, when applied preventatively, reduced the severity of Dry Patch, improved turf colour, turf quality and soil moisture content.

In addition,

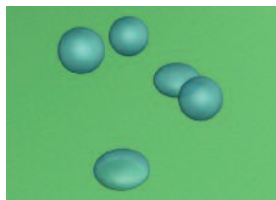
“Applied after the rootzone had dried (curatively), only Breaker BioLinks improved turf quality and reduced Dry Patch severity.”

Activity against Dry Patch – Curative Treatments*



Wetting and spreading

This agent reduces surface tension of water droplets so they can spread more readily across the turf surface. Increases the speed at which excess surface water is moved down into the rootzone.



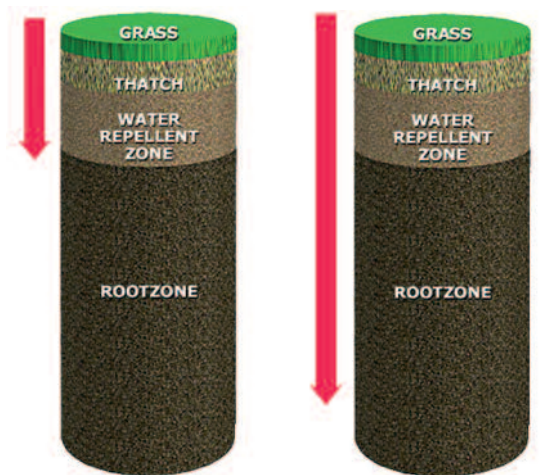
Conventional Wetters

Water droplets falling onto grass surface



Breaker BioLinks

spreads water over the surface to a far greater extent



Conventional Wetters

Breaker BioLinks

Re-Wetting

Breaker BioLinks moves through hydrophobic layers and works up to 30% deeper in the rootzone. This ensures uniform wetting of the soil profile rather than just the surface or thatch layer and improves the air:moisture balance to allow the roots to penetrate beyond the Dry Patch zone.

With Breaker BioLinks a visible response by the turf can be seen in 48 hours when applied with irrigation and a dry soil will be totally re-wetted in 4-6 hours.

Programmed Approach

Breaker BioLinks has been developed to work both on a preventative and curative level.

Due to the residual activity of Breaker BioLinks in the rootzone a concentration of wetting agent increases in line with the number of applications during the season. This cumulative effect has significant benefits when Dry Patch becomes most prevalent during July/August.



Biological Recuperation

Breaker BioLinks contains phytohormones (auxins, cytokinins, betaines, gibberelins) derived from kelp extract obtained from selective, refined Hebridean-sourced seaweed. The integration of these components into the water management programme promotes regeneration of damaged root systems and relief from summer stress.

